

INSTRUCTIONS FOR AUTHORS OF PAPERS USING L^AT_EX

Elie Azar¹, Anatoli Djanatliev², Alison Harper³, Christoph Kogler⁴, and Varun Ramamohan⁵

¹Dept. of Civil and Environmental Eng., Carleton University, Ottawa, ON, CANADA

²Dept. of Computer Science, University of Applied Sciences Ingolstadt, Ingolstadt, GERMANY,
Ingolstadt, GERMANY

³The Business School, University of Exeter, Exeter, UK

⁴Institute of Production Economics and Logistics, University of Natural Resources and Life Sciences,
Vienna, AUSTRIA

⁵Dept. of Mechanical Eng., Indian Institute of Technology Delhi, New Delhi, INDIA

ABSTRACT

This document provides instructions for producing a proceedings paper for the 2025 Winter Simulation Conference (WSC) with L^AT_EX. It also serves as a sample file that you can edit to prepare your submission, and a checklist to ensure that your submission meets the WSC 2025 requirements. Please follow the guidelines provided in this document when preparing your paper. Failure to do so may lead to your paper being rejected, returned for appropriate revision, or edited without your prior knowledge.

1 INTRODUCTION

This paper provides instructions for the preparation of papers for the 2025 Winter Simulation Conference (WSC) using L^AT_EX. There is a companion paper that provides instructions for the preparation of papers using Microsoft Word. **The easiest way to write a paper using L^AT_EX that complies with the requirements is to edit the source file, `wsc25paper.tex`, for this document.** Do not use an older version, as *some specifications have changed*. The style of this document is based on the special paper class file `wscpaperproc` which is selected by using `\documentclass{wscpaperproc}`.

An author kit is available online via the [conference website](#). The author kit includes this L^AT_EX document and its Microsoft Word companion. It also includes guidelines that you may find helpful for writing a conference paper and for giving a presentation.

This document was typeset using `pdflatex`, which allows you to use certain graphics file types that are not allowed using the outdated `latex-dvips-ps2pdf` route. For more on this issue, see Section 4.3 below.

2 GENERAL GUIDELINES

2.1 Language

The paper should be prepared using U.S. English in the interest of consistency across the proceedings. Please carefully check the spelling of words before you submit your paper. There are spell checkers for L^AT_EX as well. Some examples of software which supports spell checking are TexnicCenter, TexMaker, and TexClipse.

2.2 Paper Submission

You will submit the Portable Document Format (`.pdf`) of your paper electronically at the [conference website](#). Source files (text, graphics, bib) are not needed. If the paper is accepted, you will electronically

submit the \LaTeX source file (`.tex`) for the final version of your paper in a ZIP format that includes all figures and auxiliary files. The editors may send the file back to you with the request to make changes to conform to conference guidelines. For minor changes, the editors may make the changes themselves. Final `.pdf` files are generated by the conference proceedings editors.

You will also need to transfer the copyright of your article to the WSC using the copyright transfer form that will be available via the conference web site at the appropriate time. *For your paper to be published by the WSC, you must complete the transfer of copyright.* When you have successfully transferred the copyright, you will receive a `.pdf` receipt.

If you are unable to satisfy these requirements, you should contact the proceedings editors.

2.3 Objectivity

The content of the paper should be objective and without any appearance of commercialism. In general, comparisons of commercial software should be avoided unless they are central to the topic. If a comparison of commercial software is included, it should be based on objective analysis that includes criteria, description of ranking methodology on each criterion, and the rankings themselves to arrive at a conclusion. If an approach other than a detailed objective analysis is used to select the simulation software used for the study being reported, such as, availability of the software, or the familiarity of the analyst with the software, it should be clearly identified.

2.4 Length Constraints

2.4.1 Length of the Abstract

The abstract should be at most 150 words. Since abstracts of all papers accepted for publication in the proceedings will also appear in the final program, the length limit of 150 words will be strictly enforced for each abstract. The abstract should consist of a single paragraph, and it should not contain references or mathematical symbols. Do not include a list of keywords. Keywords are not used in WSC proceedings.

2.4.2 Length of the Paper

The page size in the proceedings must be 8.5 inches by 11 inches (21.6 cm by 27.9 cm). The overall length of the paper should be at least 5 proceedings pages. **Papers should be at most twelve (12) pages**, except for introductory tutorials, advanced tutorials, and panel sessions, for which the limit is 15 pages. Exceeding the page limit will result in rejection for the proceedings.

2.5 Font Specification and Spacing

The paper should be set in the Times New Roman font using a 11-point font size. The paper should be single spaced. Do not use other fonts; use of other fonts means the proceedings editors will need to send the paper back to you to change the font.

2.6 Margins

The width of the text area is 6.5 inches (16.5 cm). The left and right margins should be 1 inch (2.54 cm) on each page. Except for the first page, the top and bottom margins should be 1 inch (2.54 cm). First page has 1.5 inch (3.81 cm) margin from the title to the top of the page, and 1 inch bottom margin. Authors should neither change the header and footer settings nor the corresponding \LaTeX style when preparing a manuscript.

2.7 Justification

Headings of sections, subsections, and subsubsections should be left-justified. One-line captions for figures or tables should be centered. A multiline caption for a figure or table should be fully justified. All other text should be fully justified across the page (that is, the text should line up on the right-hand and left-hand sides of the page).

2.8 Headings of Sections, Subsections, and Subsubsections

Section, subsection, and subsubsection headings should appear flush left, set in the bold font style, and numbered as shown in this document. The headings for the Abstract, Acknowledgments, References and Author Biographies sections are not numbered. Section headings should be set in **FULL CAPITALS LIKE THIS PHRASE**, while subsection and subsubsection headings should be **Capitalized in Headline Style like This Phrase**. Lengthy headings should be broken across two or more lines. **Again, these formats should be accomplished using section, subsection, subsubsection, etc.**

2.8.1 Paragraphs

The first paragraph after a heading should not be indented; all other paragraphs should be indented by 0.25 inches (0.63 cm). Do not insert additional space between paragraphs.

Programming code should use “Program Start”, “Program”, and “Program End” Styles with the following guidelines.

```
class Exponential{
...// Properties of the Exponential
};
```

One-line programs should use the “Program Both” style.

```
Exponential interArrival;
```

2.8.2 Footnotes

Do not use footnotes; instead incorporate such material into the text directly or parenthetically.

2.8.3 Page Numbers

Do not include page numbers. Page numbers are generated by the proceedings editors once all accepted papers are ordered for the final proceedings.

3 FORMATTING THE FIRST PAGE

3.1 Running Heads

The running head (provided in the template) in the upper left-hand corner of the first page (which should read *Proceedings of the 2025 Winter Simulation Conference...*) is left-justified and set in the 11-point italic font style. You do not have to change the content of the first-page header; the first-page header was set by the proceedings editors in the preparation of this document.

Running heads on the second and subsequent pages should contain the last names of the authors, centered and set in the 11-point italic font style. For example, running heads for papers would appear like *Justme* for papers with one author, or *Justme and Him* for papers with two authors, or *Justme, Him, and Youtoo* for papers with three authors, etc. These are created by using the macro

```
\WSCpagesetup{LastName1, LastName2, and LastNameLastAuthor}
```

LastName1, LastName2, LastName3, LastName4, and LastName (LastAuthor)

defined in the class file. Please use this macro to set up the running heads, as it sets further parameters important for the correct layout of the document.

The author names are listed in the same order as they appear on the title page, which is the same order the author biographies are provided. These entries **do** need to be changed by the authors in the `\WSCpagesetup` command in the source for this file. Please give all author names and do not use *et al.*, except in the rare situation where they don't fit on one line. In the latter case, only the first author is given followed by "et al."

3.2 Title and Authors

Center the title of the paper across the page and set it in bold **FULL CAPITALS** so that the top edge of the title begins 1.5 inches from the top of the page. The correct placement is automatically done by the class file as well. Just use the `\title` and `\maketitle` commands as it is done in the source of this document. Multiline titles should have about the same amount of text on each line.

There should be 2 blank lines between the title and the authors' names (will be inserted by the class file if the `\author`, `\title`, and `\maketitle` commands are used).

All authors' names should have initial letters capitalized, and be listed on a line in a centered fashion, with the author's first name first and no job title or honorific. In the case of many authors, multiple centered lines might be used to list all authors. Behind each author's name is superscript ^{1, 2, 3, etc.} denoting the author's affiliation. If an author has multiple affiliations, then only the main affiliation should be listed unless it is strictly necessary to use multiple affiliations, in which case the superscript could consist of multiple indices, e.g., ^{1,2}. On the other hand, each affiliation could apply to multiple co-authors. These affiliations are detailed under the authors' names, with one blank line between authors' names and the affiliation details. Each affiliation starts with the superscript index, then the department, institution, city, standard two-letter state or province abbreviation, and country. The state abbreviation and country name should be in FULL CAPITALS. Each affiliation should be detailed in a single centered line to the extent possible, by using common abbreviations, e.g., "Dept." for "Department", "Eng." for "Engineering" and other common-sense abbreviations if needed. However, using multiple lines is acceptable if a single line is not sufficient to detail the affiliation even after a reasonable effort to abbreviate. For papers with multiple authors, the authors should be listed in order of decreasing contribution. Some examples of title page heading and common-sense abbreviations are shown in Figures 3–7 and Table 3 respectively at the end of this document. There should be two blank lines between the author fields and the text of the paper. Do not include email addresses on the first page; emails for authors are provided in the author biographies.

You should use the `\author` command to enter author names – see the source for this document.

4 FORMATTING SUBSEQUENT PAGES

Please refer to Section 2.6 for the correct margins.

4.1 Mathematical Expressions in Text and in Displays

Display only the most important equations, and number only the displayed equations that are explicitly referenced in the text. To conserve space, simple mathematical expressions such as $\bar{Y} = n^{-1} \sum_{i=1}^n Y_i$ may be incorporated into the text. Mathematical expressions that are more complicated or that must be referenced later should be displayed, as in

$$s^2 = \frac{1}{n-1} \sum_{i=1}^n (Y_i - \bar{Y})^2.$$

If a display is referenced in the text, then enclose the equation number in parentheses and place it flush with the right-hand margin of the column. For example, the quadratic equation has the general form

$$ax^2 + bx + c = 0, \text{ where } a \neq 0. \quad (1)$$

In the text, each reference to an equation number should also be enclosed in parentheses. For example, the solution to (1) is given in (3) in Appendix A.

If the equation is at the end of a sentence, then you should end the equation with a period. If the sentence in question continues beyond the equation, then you should end the equation with the appropriate punctuation – that is, a comma, semicolon, or no punctuation mark. If the equation is not included within any sentence, but just given between two paragraphs, no punctuation is used as in equation (2).

$$ax^2 + bx + c = 0 \quad (2)$$

4.2 Displayed Lists

A displayed list is a list that is set off from the text, as opposed to a run-in list that is incorporated into the text. The bulleted list given below provides more information about the format of a displayed list.

- Use standard bullets instead of checks, arrows, etc. for bulleted lists.
- 1. For numbered lists, the labels should not be arabic numerals enclosed in parentheses because such labels cannot be distinguished from equation numbers.

Indent the paragraph after the list.

4.3 Figures and Tables

Figures and tables should be centered within the text and should not extend beyond the right and left margins of the paper. Figures and tables can make use of color since the WSC produces electronic proceedings. However, try to select colors that can be differentiated when printing in black and white in consideration of people using such printers. Figures and tables are numbered sequentially, but separately, using arabic numerals. All tables and figures should be explicitly referenced in the text and they should not be placed before they are referenced. The reference is always written in full (Figure 1), and never abbreviated as in “(Fig. 1)”. For figures which can fit next to each other, the author can choose to align them next to each other with the figure text centered below each figure and on the same line for both figures. For tables which can fit next to each other, the author can also choose to align them next to each other with the table text centered above each table and on the same line for both tables.

The table’s one-line captions are centered, while multi-line captions are fully justified. The captions appear *above* the table. Captions can be written using normal sentences with full punctuation. All captions should end with a period. It is fine to have multiple-sentence captions that help to explain the table. See Tables 1 and 2 for examples.

Table 1: Table captions appear above the table, and if they are longer than one line they are fully justified. Captions are written using normal sentences with full punctuation. It is fine to have multiple-sentence captions that help to explain the table.

Creature	IQ	Diet
dog	70	anything
human	60	ice cream
dolphin	120	fish fillet

Captions end with a period. One-line captions are centered, while multiline captions are fully justified. Figure captions appear below the figure. See Figures 1 and 2 for examples.

Table 2: Comparison between samples.

Sample	Height (cm)
Plant one	50
Plant two	58

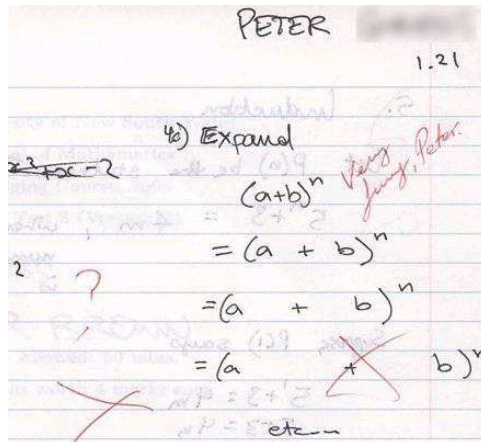


Figure 1: An unusual answer to a question.

References to tables and figures identified by number are capitalized. Avoid using “in the previous table” or “in the figure below”, as positions might change in the final formatting. Be sure to use the `\label` command within the figure or table environment and refer to the associated figure or table using `Table~\ref{labelgiven}`. Please do not use hard coded figure/table numbers. This is error prone, and the references will not be hyperlinks.

Please ensure that the text within figures uses standard fonts and is readable: Arial (recommended), Symbol, etc. The minimum font size should be around 9pt (Arial). Remember that you might need larger fonts in your original figure if you reduce the size of the figure in your WSC paper to less than 100% (e.g., when you insert your figure with a 50% of its original size, your original fonts have to be ≥ 18 pt). This applies to all text elements in the figure, including captions of axes, etc.

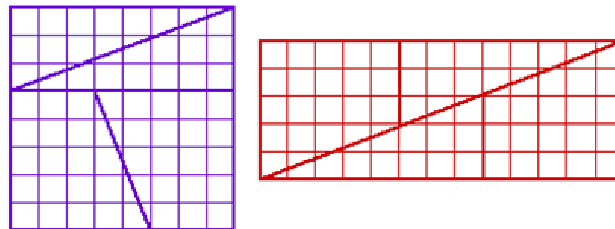


Figure 2: The area of the square is 64 squares, while that of the rectangle is 65 squares, yet they are made of the same pieces! How is this possible?

Including graphics files in your document can be complicated. Use .jpg, .png or .pdf files. The main difference between the formats is how they store the images and how well suited they are for specific graphics. You can choose between bitmap and vector graphics. Bitmap graphics are well suited for photographs (jpg is very common here) or for screenshots (PNG is a lossless encoding in contrast to jpg, and is thus better suited for all those cases where you have sharp edges in your graphics). Vector graphics are the encoding to be chosen for all kinds of drawings (diagrams, charts, ...). In contrast to bitmap formats, they can be scaled to any size without any loss of sharpness. This makes it possible to read such graphics even if two pages are printed on one sheet of paper, or if the documents are read electronically. So what to choose for your L^AT_EX document? As a rule of thumb you should always prefer PDF or PS and EPS. In general these three encodings can contain both, bitmap and vector graphics. But there is no need (and no use) to convert your bitmaps to any of these.

Use the PDFLaTeX command to generate your pdf file, as was done with this file. The final file format is PDF. If you include figures via `includegraphics`, then please do so without the file ending (e.g., skip .pdf, .ps, ...).

4.4 Definitions and Theorems

Definitions, theorems, propositions, etc. should be formatted like a normal paragraph with boldface heading as shown in the examples below. Number these items separately and sequentially. You may choose not to separately number theorems, propositions, corollaries, etc., as opposed to the example below where corollaries and theorems are numbered together. Search the source of this document to see how these environments were defined. The key command is `\newtheorem`. Do not use a period after the definition, theorem, corollary or proposition *number*, but do end the sentence with a period.

Definition 1 In colloquial New Zealand English, the term *dopey mongrel* is used to refer to someone who has exhibited less than stellar intelligence.

Theorem 1 If a proceedings editor from New Zealand accidentally deletes his draft of the author kit shortly after completing it, he would be considered to be a dopey mongrel.

Corollary 2 One of the proceedings editors is a dopey mongrel.

Indent the paragraph after the definition or theorem.

4.5 Hyperlinks

A *hyperlink* specifies a web address (URL) or an email address. The use of hyperlinks allows authors for providing readers access to external electronic information, such as a dynamic simulation or animation. The use of hyperlinks is at the discretion of the author(s). **While the use of hyperlinked text is encouraged in the main body of the paper, it is recommended that corresponding web addresses and other identifying information should be provided in the list of references.** For example, instead of spelling out the web address of the conference website, one would refer to the [conference website](#) (WSC 2025), and the corresponding entry in the reference section will spell out the associated web address and other relevant information such as author(s) and/or the organization that published the content. This would allow readers for searching for the content using the author(s), organization, etc. if the actual web address is changed. This also allows for a cleaner appearance of the main body of the paper.

If the author(s) feel that sufficient information is provided in the main body of the paper to locate the content even if the web address is changed, the address can be included in the main body of the paper itself.

Each hyperlink should be set in the same font as the text. Hyperlinks are *not* underlined. A live hyperlink (or hot link) – that is, a hyperlink that will activate your web browser and take it to an external web site or that will activate your email software for sending a message to a specific email address – should be colored blue. You have already seen examples of such hyperlinks in this paper. To use live hyperlinks in a proceedings paper, use the `hyperref` package. If you are using PDFLaTeX to generate your pdf file then,

LastName1, LastName2, LastName3, LastName4, and LastName (LastAuthor)

as was done for this file, you should add the following as the last `\usepackage` command in the preamble.

```
\usepackage[pdftex,colorlinks=true,urlcolor=blue,citecolor=black,anchorcolor=black,linkcolor=black]{hyperref}
```

On the other hand, if you are using the traditional `latex - dvips - ps2pdf` route, then users of MiKTeX or PCTeX for Windows should add the command

```
\usepackage[dvips,colorlinks=true,urlcolor=blue,citecolor=black,anchorcolor=black,linkcolor=black]{hyperref}
```

as the last `\usepackage` command in the preamble, while users of Y&Y TeX should add the command

```
\usepackage[dvipsones,colorlinks=true,urlcolor=blue,citecolor=black,anchorcolor=black,linkcolor=black]{hyperref}
```

as the last `\usepackage` command in the preamble. (In general the `\usepackage` command above that works for MiKTeX running on a Windows system should also work for most implementations of L^AT_EX running on a Unix or Apple system.) Thus the hypertext link [conference website](http://www.wintersim.org) (WSC 2025) to the WSC website can be established by the command

```
\href{http://www.wintersim.org}{conference website}
```

This is especially important since WSC papers are filed in the IEEE Xplore digital library, which does not allow hyperlinks, so for that purpose the hyperlinks are removed. Therefore it is recommended to add all hypertext references to the `.bib` file and to refer to them from the text as it is done in the example above. All live hyperlinks still appear in the CD of the proceedings and in other repositories.

If you use the package `hyperref` as suggested here, and if you use citation commands to handle references, then your citations will become hyperlinks (as in this document).

Non-live hyperlinks – that is, the hyperlinks that are included for the reader’s information but do not actually invoke the reader’s web browser or email software should be colored black.

4.6 Citing a Reference

To cite a reference in the text, use the author-date method. Thus, Chien (1989) could also be cited parenthetically (Chien 1989). Do not use a comma within this parenthesis. For a work by three or more authors, use an abbreviated form. For example, a work by Banks, Carson, and Nelson would be cited in one of the following ways: Banks et al. (2000) or (Banks et al. 2000).

Parenthetical citations are enclosed in parentheses (), not square brackets []. Semicolons separate the items in a series of such citations.

The following is a list of correct forms of citations:

- Brown and Edwards (1993)
- (Brown and Edwards 1993)
- (Smith 1987; Brown and Edwards 1992; Brown et al. 1995)

The following is a list of **incorrect** forms of citations:

- Brown and Edwards [1993]

LastName1, LastName2, LastName3, LastName4, and LastName (LastAuthor)

- (Brown and Edwards, 1993)
- (Smith, 1987; Brown and Edwards, 1993)
- (Smith 1987, Arnold, Brown and Edwards 1992, Brown et al. 1995)

4.7 General Style and Sequence of References

Place the list of references after the appendices. The section heading is **REFERENCES**, and it is not numbered. List only references that are cited in the text. Do not number the references. The only exception are papers in the “tutorial” tracks: Here it is permitted to have an additional section heading **ADDITIONAL READING** after references, followed by further literature that is recommended for continued studies but not directly used within the text of the paper

Do not number the references and arrange them in the following order:

- By the last name of the first author.
- For papers with the same first author, arrange first all papers by this author only, then all papers by this author and one co-author, and finally all papers with this author and two or more co-authors.
- Within this sorting sequence, arrange papers by year.

To identify multiple references by the same authors and year, append a lower case letter to the year of publication; for example, 1984a and 1984b. The same applies to references that have more than two authors and the same first author and year.

Give complete references without abbreviations. List all authors except when there are more than six authors, in which case the first six author names are shown followed by “*et al.*”.

The format for other types of reference as well as examples can be inferred from the examples in the references section, which include:

- A technical report (Chien 1989)
- A proceedings article (Cheng 1994)
- A conference contribution without book publication (Rabe et al. 2017)
- A journal article with two authors (Powell and Mustafee 2017)
- A journal article with more than two authors (Gupta et al. 1973)
- A book by two authors (Hammersley and Handscomb 1964)
- A chapter in a book (Schruben 1979)
- An unpublished thesis or dissertation (Steiger 1999)
- A book with no identified authors (The University of Chicago Press 2010)
- A document available on the web (WSC 2025)

Be sure that references to past WSC proceedings include the necessary information, as in Cheng (1994) and Hunter and Pasupathy (2022). This information and the template can be exported as bibtex code by the IEEE website for the considered paper. Below is a template for a bib entry of a (yyyy) Winter Simulation Conference proceedings paper:

```
@INPROCEEDINGS{(!Provide a unique key here!),
  author={aaaa},
  title={tttt},
  year={yyyy},
  volume={}, % you can leave empty
  number={}, % you can leave empty
  pages={n-m},
  booktitle={yyyy Winter Simulation Conference (WSC)},
  doi={10.1109/WSC.....}
```

LastName1, LastName2, LastName3, LastName4, and LastName (LastAuthor)

}

Please do not add any additional attributes.

4.8 Formatting References According to Their Type of Publication

Use hanging indentation to distinguish individual entries. Do not insert additional space between references.

You can enter the references using (a) *BIBTEX* as discussed in Section 5, (b) using the environment `thebibliography` via the `\bibitem` and `\cite` commands, or (c) the `hangref` environment as shown below. Please note that neither (b) nor (c) are recommended. These alternatives may mean extra work for you and the editor during the editing process. Option (c) means in addition that the references will not be hyperlinks – as the proceedings are electronic proceedings this is not recommended at all.

To use `hangref` you would enter the following lines.

```
\begin{hangref}
\item The first reference goes here, and if you happen to have enough
information on the line you will be able to see how the second and if
you really have lots of text to be displayed later lines of the
reference are indented.
\item The second reference goes here, and once again later lines are
indented if you have a sufficient amount of words in the text block.
\item Further references appear here.
\end{hangref}
```

4.8.1 Journal Articles

The bibliographic style for a journal article is: <Surname of first author>, <Author’s initial(s)>, <Initials and surnames of other authors>. <year>. <Capitalized article title in quotes>. <Journal Name in Headline Italics> <Volume number>(<issue number>):<page numbers>.

Gupta, S. S., K. Nagel, and S. Panchapakesan. 1973. “On the Order Statistics from Equally Correlated Normal Random Variables”. *Biometrika* 60(2):403-413.

Powell, J. H. and N. Mustafee. 2017. “Widening Requirements Capture with Soft Methods: An Investigation of Hybrid M&S Studies in Healthcare”. *Journal of the Operational Research Society* 68(10):1211-1222.

4.8.2 Books

The bibliographic style for books is: <Surname of first author>, <Author’s initial(s)>, <Initials and surnames of other authors>. <year>. <Book Name in Headline Italics>. [<edition> ed.]<city of publication>: <publisher>.

Banks, J., J. S. Carson, B. L. Nelson, and D. M. Nicol. 2000. *Discrete-Event System Simulation*. 3rd ed. Upper Saddle River, New Jersey: Prentice-Hall, Inc.

Hammersley, J. M. and D. C. Handscomb. 1964. *Monte Carlo Methods*. London: Methuen.

Law, A. M. and W. D. Kelton. 2000. *Simulation Modeling & Analysis*. 3rd ed. New York: McGraw-Hill, Inc.

4.8.3 Book Contributions

The bibliographic style for book contributions is: <Surname of first author>, <Author’s initial(s)>, <Initials and surnames of other authors>. <year>. <Capitalized article title in quotes>. In <Book Name in Headline Italics>, edited by <Initials and surnames of editors>, <page numbers>. <city of publication>: <publisher>. Publishers are not abbreviated (e.g., “ASIM”) but written in full (e.g., “Arbeitsgemeinschaft Simulation”).

LastName1, LastName2, LastName3, LastName4, and LastName (LastAuthor)

Schruben, L. W. 1979. "Designing Correlation Induction Strategies for Simulation Experiments". In *Current Issues in Computer Simulation*, edited by N. R. Adam and A. Dogramaci, 235-256. New York: Academic Press.

4.8.4 Conferences (except Winter Simulation Conferences)

For conferences that have been published as an (electronic) book publication (with editors, publisher, ISBN), use the same style as for book contributions (take care to specify the city of publication, not the conference location).

For conferences that have not been published as a book, the bibliographical style is: <Surname of first author>, <Author's initial(s)>, <Initials and surnames of other authors>. <year>. <Capitalized article title in quotes>. <Conference Name in Headline Italics>, <full date(s) of conference>, <location of conference>, <page numbers if available>.

Rabe, M., F. Dross, A. Wuttke. 2017. "Combining a Discrete-event Simulation Model of a Logistics Network with Deep Reinforcement Learning". In *Proceedings of the MIC and MAEB 2017 Conferences*, July 4th-7th, Barcelona, Spain, 765-774.

4.8.5 Papers from Winter Simulation Conferences

For WSC papers, use the bibliographic style: <Surname of first author>, <Author's initial(s)>, <Initials and surnames of other authors>. <year>. <Capitalized article title in quotes>. In <year in Italics> *Winter Simulation Conference (WSC)*, <page numbers> <hyperlinked doi site>. The information provided above follows the bibtex code exported directly from the IEEE website for a considered paper. This reference format specific for WSC papers is designed to reduce the workload of authors (otherwise, WSC papers would be counted as book contributions which, as described previously, would require listing editor names and also full publisher names and city of publication, i.e., Institute of Electrical and Electronics Engineers, Inc. in Piscataway, New Jersey).

Cheng, R. C. H. 1994. "Selecting Input Models". In *1994 Winter Simulation Conference (WSC)*, 184-191 <https://doi.org/10.1109/WSC.1994.717117>.

Hunter, S. R. and R. Pasupathy. 2022. "Central Limit Theorems for Constructing Confidence Regions in Strictly Convex Multi-Objective Simulation Optimization". In *2022 Winter Simulation Conference (WSC)*, 3015-3026 <https://doi.org/10.1109/WSC57314.2022.10015390>.

4.8.6 Handbooks, Reports, and Other Publications

If you need to cite handbooks or other publications that have editors but no authors, use the following bibliographic style: <Surname of first editor>, <Editor's initial(s)>, <Initials and surnames of other editors>, Editors. <year>. <Book Name in Headline Italics>. <city of publication>: <publisher>.

If you need to cite reports, use the following bibliographic style: <Surname of first author>, <Author's initial(s)>, <Initials and surnames of other authors>. <year>. <Capitalized article title in quotes>. [Report number], <publisher>.

Chien, C. 1989. "Small Sample Theory for Steady State Confidence Intervals". Technical Report No. 37, Department of Operations Research, Stanford University, Stanford, California.

If you need to cite papers submitted to public repository such as arXiv, use the following bibliographic style: <Surname of first author>, <Author's initial(s)>, <Initials and surnames of other authors>. <year>. <Capitalized article title in quotes>. <Repository identification in Italics>.

Kingma, D. P., and J. Ba. 2014. "Adam: A Method for Stochastic Optimization". *arXiv preprint arXiv: 1412.6980*.

If you refer to an archival reference (e.g., an unpublished manuscript), it should not have any published version.

If you need to cite government documents without authors' names, use the following bibliographic style: <Name of government agency>. <year>. <Capitalized document title in quotes>. [Report number], <publisher>.

LastName1, LastName2, LastName3, LastName4, and LastName (LastAuthor)

Ontario Ministry of Health. 1994. "Selected Findings from the Mental Health Supplement of the Ontario Health Survey". Queen's Printer for Ontario.

4.8.7 Online Publications

For publications that are only WWW pages, if there is no way to avoid them, use the best fitting style from the categories above and add the URL and the date when you accessed the page without the year:

Sharon Parq Associates. 2018. WordTips: Numbering Equations. http://word.tips.net/Pages/T000273_Numbering_Equations.html, accessed 15th April.

If you just refer to a document from the WWW that has a clear publication date, the citation year is this date and the year of access must be given:

Steiger, N. M. 1999. *Improved Batching for Confidence Interval Construction in Steady-State Simulation*. Ph.D. thesis, Department of Industrial Engineering, North Carolina State University, Raleigh, North Carolina. <http://www.lib.ncsu.edu/resolver/1840.16/4713>, accessed 12th February 2019.

4.8.8 References with Many (6+) Authors

For any reference, if there are more than six authors, then the first six names followed by "et al." might be used instead of showing all author names.

Paszek, P., S. Ryan, L. Ashall, K. Sillitoe, C. V. Harper, D. G. Spiller *et al.* 2020. "Population Robustness Arising from Cellular Heterogeneity". *Proceedings of the National Academy of Sciences* 107(25): 11644-11649.

5 USING BIBTEX

Using BIBTEX for referencing is the recommended way. Indeed, the references in this document were generated using BIBTEX, so the source for this document serves as an example of how to use BIBTEX to meet the WSC formatting requirements. One benefit of using BIBTEX is that bibliography formatting and referencing can be greatly simplified: the correct citation and reference list style is automatically created. We assume that you already know how to use BIBTEX. Software to manage BIBTEX files, for example JabRef (Java based), can support you on managing and creating valid bib files. *Please open your bib file with a software like JabRef BEFORE you submit your final version. Experience shows that almost all manually edited bib files contain duplicated bib keys (which means a random selection of references), broken entries which usually lead to missing bibliographic information, invalid keys, and last but not least invalid tokens in bib files. Bib files DO NOT support comments. BIBTEX should not report any error for your final submitted document.*

The BIBTEX input file `wsc.bst` and the L^AT_EX macros found in `wscbib.tex` are required, but are included in `wsc25sty.tex`, so no other files (apart from your bibliography) are required. The macros in these files have been tested with L^AT_EX. They are not intended for use with L^AT_EX 2.09, which is obsolete. The file `wsc.bst` is essentially the same as `chicago.bst`, a file found on many L^AT_EX distributions, but is modified to be more compatible with WSC format requirements.

The simplest way to write a WSC article that uses BIBTEX is to take the source file for this document, and modify it to generate your article.

5.1 Set Up the BIBTEX Input Files

BIBTEX requires a bibliography style file (extension `.bst`) and a bibliography database file (extension `.bib`). This is achieved using

```
\bibliographystyle{wsc}
\bibliography{demobib}
```

LastName1, LastName2, LastName3, LastName4, and LastName (LastAuthor)

just before the AUTHOR BIOGRAPHY section. The file `demobib` in the `\bibliography` command should be replaced with the base names of your BIBTEX `*.bib` files that you use for your bibliography. BIBTEX is then run as usual to create a bibliography file (`*.bbl`).

5.2 Use the Citation Macros

There are a number of macros available to cite references in the L^AT_EX source document. The `\cite` macro can be used to give a list of references in parentheses. For example,

```
\cite{cheng:input94,law:simulationc}
```

results in the citation (Cheng 1994; Law and Kelton 2000). A reference that functions as a noun is created with the `\citeN` macro. For example,

```
\citeN{law:simulationc} say \ldots
```

results in: Law and Kelton (2000) say ...

Citations within parentheses do not need the extra parentheses provided by the above citation commands. To suppress the inclusion of extra parentheses, use the `\citeNP` macro. To obtain (Law and Kelton 2000), for example, use:

```
(\citeNP{law:simulationc}).
```

When there are three or more authors, the name of the first author should be given along with the text “et al.” This can be achieved with the `\shortcite` macro. To obtain (Banks et al. 2000; Paszek et al. 2010), for example, use:

```
\shortcite{bcnn:simulation,paszek:population}
```

The macros `\shortciteN` and `\shortciteNP` are also available to obtain “et al.” when a citation with many authors is used as a noun.

For further information on the available commands for citing, search for `\cite` in the file `wscbib.tex`, or consult the file `chicago.sty`. The commands for making BIBTEX work with `wsc.bst` are very similar to those used in the standard L^AT_EX file `chicago.sty`.

5.3 Generate the Bibliography File

Run PDFLaTeX (or L^AT_EX), then BIBTEX, and then PDFLaTeX two more times. Running PDFLaTeX the first time creates the `.aux` file. Running BIBTEX creates the `.bbl` file. Running PDFLaTeX again (twice) fixes the bibliography and citation references.

ACKNOWLEDGMENTS

Place the acknowledgments section, if needed, after the main text, but before any appendices and the references. The section heading is not numbered. These instructions are adapted from instructions that have been iteratively updated and improved by proceedings editors and several other individuals, who are too numerous to name separately, since the first set of instructions were written by Barry Nelson for the 1991 WSC.

A APPENDICES

Place any appendices after the acknowledgments and label them **A**, **B**, **C**, and so forth.

The solution to (1) has the form

$$x = \frac{-b \pm \sqrt{b^2 - 4ac}}{2a} \text{ if } a \neq 0. \quad (3)$$

B GETTING HELP

If you need help in preparing your paper, contact the proceedings editors. You can reach us individually using the contact information below:

Elie Azar (*lead editor*)
Carleton University
E-mail: elie.azar@carleton.ca

Anatoli Djanatliev
University of Applied Sciences Ingolstadt
E-mail: anatoli.djanatliev@thi.de

Alison Harper
University of Exeter
E-mail: a.l.harper@exeter.ac.uk

Christoph Kogler
University of Natural Resources and Life Sciences
E-mail: christoph.kogler@boku.ac.at

Varun Ramamohan
Indian Institute of Technology Delhi
E-mail: varunr@mech.iitd.ac.in

C AUTHORS' CHECKLIST

We strive for a consistent appearance in all papers published in the proceedings. If you have used the template and styles within this author's kit, then almost all of the requirements in this checklist will be automatically satisfied, and there is very little to check. Please **print a hardcopy of your paper**, and go over your printed paper to make sure it adheres to the following requirements. Thank you!

1. The paper can be *at most* 12 pages long (15 for tutorials and panel sessions). Longer papers cannot be published; the minimum number of pages is 5.
2. No keywords, footnotes or page numbers.
3. The paper has been spellchecked using U.S. English.
4. The paper title is in bold and in ALL CAPS. Please use the templates to use correct indents and spaces.
5. The abstract must have 150 or fewer words.
6. Double-check that the author section after the title is formatted correctly: list author names and then affiliations. Country names are in ALL CAPS. Do not forget that the last author name is preceded by “, and”.
7. Use the correct running heads! Use the proceedings editors and chairs on page one, and use the last names separated by commas for the other pages. Do not forget that the last Last Name is preceded by “, and”.
8. Section titles are in bold and ALL CAPS, subsections capitalize the first letter of important words. Please use the templates to use correct indents and spaces and make sure to left-justify. Section titles are numbered, except for the abstract, acknowledgments, references and author biographies.
9. The first line of each paragraph is indented, except for the first paragraph of a section or subsection.
10. There should be extra lines before and after enumerations, lists, definitions, etc.

11. Citations are by author and year; citations are enclosed in parentheses, not brackets.
12. References are in the hangref style with a 9pt font, listed alphabetically by the last name(s) of the author(s).
13. Double-check that figures and tables are referenced in the text and have the correct caption format! Table captions appear above the table. Figure captions appear below the figure. All text in figures and tables is readable (for figures, minimum final print font should be 8pt using Arial or 9pt using Times, and for tables should be 9pt using Times).
14. Verify that equations are centered and that all equation numbers are in parentheses and right-justified.
15. Ensure that hyperlinks will work as of the date of December 2025. Live hyperlinks are blue, non-live hyperlinks are black.
16. Do not forget the “author biographies” section! Author biographies must be one paragraph per author and must include an email address. Author biographies are mandatory for all authors and given in the same sequence as in the running head.

The following items should work automatically if you are using the WSC 2025 template, but you are encouraged to double-check, especially if you copy and paste any text from other documents:

1. Paper is letter format (8.5” x 11”, or 216 mm x 279 mm), not DIN A4 format. Please use the required margins as defined in Section 2.6.
2. All text is in 11-Point Times New Roman with a line spacing of 12.5pt, except references and author biographies, which are 2pts smaller in size and spacing.

REFERENCES

- Banks, J., J. S. Carson, B. L. Nelson, and D. M. Nicol. 2000. *Discrete-Event System Simulation*. 3rd ed. Upper Saddle River, New Jersey: Prentice-Hall, Inc.
- Cheng, R. C. H. 1994. “Selecting Input Models”. In *1994 Winter Simulation Conference (WSC)*, 184–191 <https://doi.org/10.1109/WSC.1994.717117>.
- Chien, C. 1989. “Small Sample Theory for Steady State Confidence Intervals”. Technical Report No. 37, Department of Operations Research, Stanford University, Stanford, California.
- Gupta, S. S., K. Nagel, and S. Panchapakesan. 1973. “On the Order Statistics from Equally Correlated Normal Random Variables”. *Biometrika* 60(2):403–413.
- Hammersley, J. M., and D. C. Handscomb. 1964. *Monte Carlo Methods*. London: Methuen.
- Hunter, S. R., and R. Pasupathy. 2022. “Central Limit Theorems for Constructing Confidence Regions in Strictly Convex Multi-Objective Simulation Optimization”. In *2022 Winter Simulation Conference (WSC)*, 3015–3026 <https://doi.org/10.1109/WSC57314.2022.10015390>.
- Law, A. M., and W. D. Kelton. 2000. *Simulation Modeling & Analysis*. 3rd ed. New York: McGraw-Hill, Inc.
- Paszek, P., S. Ryan, L. Ashall, K. Sillitoe, C. V. Harper, D. G. Spiller *et al.* 2010. “Population Robustness Arising from Cellular Heterogeneity”. *Proceedings of the National Academy of Sciences* 107(25):11644–11649.
- Powell, J. H., and N. Mustafee. 2017. “Widening Requirements Capture with Soft Methods: An Investigation of Hybrid M&S Studies in Health Care”. *Journal of the Operational Research Society* 68(10):1211–1222.
- Rabe, M., F. Dross, and A. Wuttke. 2017. “Combining a Discrete-event Simulation Model of a Logistics Network with Deep Reinforcement Learning”. In *Proceedings of the MIC and MAEB 2017 Conferences*. July 4th-7th, Barcelona, Spain, 765-774.
- Schruben, L. W. 1979. “Designing Correlation Induction Strategies for Simulation Experiments”. In *Current Issues in Computer Simulation*, edited by N. R. Adam and A. Dogramaci, 235–256. New York: Academic Press.
- Steiger, N. M. 1999. *Improved Batching for Confidence Interval Construction in Steady-State Simulation*. Ph.D. thesis, Department of Industrial Engineering, North Carolina State University, Raleigh, North Carolina. <http://www.lib.ncsu.edu/resolver/1840.16/4713>, accessed 12th February 2019.
- The University of Chicago Press 2010. *The Chicago Manual of Style*. 16th ed. Chicago: The University of Chicago Press. <http://www.chicagomanualofstyle.org>.
- WSC 2025. “Winter Simulation Conference”. Accessed 20th January 2025.

AUTHOR BIOGRAPHIES

Author biographies are mandatory for all authors and given in the same sequence as in the running head. Use a smaller font size (9pt) as it is set up in this template. Giving an email address is mandatory and the author's name is set in bold capitals (see the examples below). Separate the authors by an empty line with the same style. Give only one paragraph per author, but sufficient information to understand the author's position and scientific background.

ELIE AZAR is a Canada Research Chair and Associate Professor in the Department of Civil and Environmental Engineering at Carleton University in Ottawa, Canada. His research interests include human-centered building design and operation, occupant behavior modeling, building performance simulation, agent-based modeling, and data-driven predictive models. He has authored numerous scientific research articles in his field and edited books focused on sustainability, smart cities, and artificial intelligence. His email address is elie.azar@carleton.ca and his website is <https://carleton.ca/cee/profile/elie-azar/>.

ANATOLI DJANATLIEV is an Associate Professor for Computer Science at the University of Applied Sciences Ingolstadt. He received his Ph.D. degree (Dr.-Ing.) and his M.Sc. in computer science (Dipl.-Inf. Univ.) from the engineering faculty of the University of Erlangen-Nuremberg in 2015 and 2008, respectively. Until 2010, he worked as a software engineer within the area of model-based testing and automated test case generation. Thereafter, he was leading a research group for Connected Mobility at the University of Erlangen-Nuremberg. His previous research focus was related to prospective assessments of health technologies, and healthcare decision-support. His current research interests include various topics on simulation and modeling using agent-based simulation, and hybrid simulation. Major application areas are simulation of healthcare systems, vehicular networks, innovative aspects of connected mobility, and future mobility services. His e-mail address is anatoli.djanatliev@thi.de and his website is <https://www.thi.de/en/computer-science/people-i/prof-dr-anatoli-djanatliev>.

ALISON HARPER is a Lecturer in Operations and Analytics at University of Exeter Business School. Her research interests include open science for computer simulation, real-time discrete-event simulation, and hybrid modeling. Her email address is a.l.harper@exeter.ac.uk and her website is <https://experts.exeter.ac.uk/34992-alison-harper>.

CHRISTOPH KOGLER is a postdoctoral project leader at the University of Natural Resources and Life Science Vienna, Austria. His research focuses on sustainability, supply chain management, transportation and logistics. As a passionate lecturer, he is committed to simulation education, has won two teaching awards, and has been nominated twice for Austria's State Award of Teaching. He conducted research stays at the University of California in Berkeley, Brno University of Technology, and University of Freiburg. He serves as section editor for wood value chain management, economics, and logistics as well as editorial board member for DREWNO and reviewed for more than 30 journals. His e-mail address is christoph.kogler@boku.ac.at and his website is <https://forschung.boku.ac.at/fis/staff?name=ChristophKogler>.

VARUN RAMAMOZHAN is an Associate Professor in the Department of Mechanical Engineering at the Indian Institute of Technology Delhi, located in New Delhi, India. His research interests include probabilistic modeling, simulation and simulation optimization, with applications in healthcare operations, health economics and outcomes research, and military operations. His e-mail address is varunr@mech.iitd.ac.in and his website is <https://web.iitd.ac.in/~varunr>.

LastName1, LastName2, LastName3, LastName4, and LastName (LastAuthor)

AUTHOR LIST TEMPLATES (TITLE PAGE)

First Name Last Name 1¹, and First Name Last Name 2²

¹Department 1, Institution 1, City 1, STATE 1, COUNTRY 1

²Department 2, Institution 2, City 2, STATE 2, COUNTRY 2

Figure 3: Example title page heading with each author having a single and different affiliation.

First Name Last Name 1^{1,2}, and First Name Last Name 2³

¹Department 1, Institution 1, City 1, STATE 1, COUNTRY 1

²Department 2, Institution 2, City 2, STATE 2, COUNTRY 2

³Department 3, Institution 3, City 3, STATE 3, COUNTRY 3

Figure 4: Example title page heading with one of the authors having multiple affiliations. Note that listing multiple affiliations for an author is used only if it is strictly needed, otherwise only the main affiliation should be listed.

First Name Last Name 1¹, and First Name Last Name 2¹

¹Department 1, Institution 1, City 1, STATE 1, COUNTRY 1

Figure 5: Example title page heading with both authors having the same affiliation.

First Name Last Name 1^{1,2}, First Name Last Name 2¹, and First Name Last Name 2³

¹Department 1, Institution 1, City 1, STATE 1, COUNTRY 1

²Department 2, Institution 2, City 2, STATE 2, COUNTRY 2

³Department 3, Institution 3, City 3, STATE 3, COUNTRY 3

Figure 6: Example title page heading with one of the authors having multiple affiliations, one of which is identical to that of another author.

LastName1, LastName2, LastName3, LastName4, and LastName (LastAuthor)

First Name Last Name 1¹, First Name Last Name 2¹, First Name Last Name 3²
First Name Last Name 4³, and First Name Last Name 5⁴

¹Department 1, Institution 1, City 1, STATE 1, COUNTRY 1

²Department 2, Institution 2, City 2, STATE 2, COUNTRY 2

³Department 3, Institution 3, City 3, STATE 3, COUNTRY 3

⁴Department 4, Institution 4, City 4, STATE 4, COUNTRY 4

Figure 7: Example title page heading that requires two lines to list all author names. Note that when multiple lines are needed to list all author names like here, the length of each line should be made roughly equal.

EXAMPLES OF ABBREVIATIONS FOR AFFILIATIONS (TITLE PAGE)

Table 3: Examples of common abbreviations used in affiliations in the title page heading. These examples are not exhaustive nor definitive, and the authors can use any common-sense abbreviations if needed to streamline their affiliations (with the goal of keeping an affiliation within one single line).

Full Phrase	Abbreviation
Department	Dept.
Engineering	Eng.
Management	Mgmt.
Operations Research	Op. Res. or OR
Industrial Engineering and Operations Research	IEOR
Electrical Engineering and Computer Science	EECS
Management Science and Engineering	MS&E