

North Carolina Agricultural and Technical State  
University

**Dissertation Title**

Student Name

A [thesis or dissertation] submitted to the graduate faculty  
in partial fulfillment of the requirements for the degree of  
**[Degree Type goes here: e.g. Master of Science or Doctor of  
Philosophy]** in  
[Program Name goes here: e.g. Electrical Engineering or Leadership  
Studies]

Major Professor: Major Professor

Greensboro, North Carolina  
2025(Year)

This is to certify that the **Doctoral Dissertation** of  
**Student Name**  
has met the dissertation requirements of  
**North Carolina Agricultural and Technical State University**  
Greensboro, North Carolina  
[2025(Year)]

Approved by:

---

[*Type Name & delete brackets*]  
Major Professor

---

[*Type Name & delete brackets*]  
Committee Member

---

[*Type Name & delete brackets*]  
Committee Member

---

[*Type Name & delete brackets*]  
Committee Member

---

[*Type Name & delete brackets*]  
Committee Member

---

[*Type Name & delete brackets*]  
Department Chair

---

Dr. Clay S. Gloster, Jr.  
Dean, The Graduate College

© Copyright by

Student Name

2025(Year)

# ABSTRACT

Your abstract text goes here. Keep it concise, structured, and self-contained.

# CONTENTS

<b>Abstract</b>	<b>iv</b>
<b>List of Figures</b>	<b>vi</b>
<b>List of Tables</b>	<b>vii</b>
<b>1 Introduction</b>	<b>1</b>
1.1 Sample Level Two Heading and Heading Information . . . . .	1
1.1.1 Another Sample Level Two Heading . . . . .	1
1.1.1.1 Sample Level Three Heading and Template Information . .	1
<b>2 Literature Review</b>	<b>3</b>
2.1 Sample Level Two Heading and Information About Inserting Tables . . . . .	3
2.1.1 Sample Level 3 Heading . . . . .	3
<b>3 Methodology</b>	<b>4</b>
3.1 Sample Level Two Heading . . . . .	4
3.1.1 Sample Level Three Heading . . . . .	4
<b>4 Results and Discussion</b>	<b>6</b>
4.1 Sample Level Two Heading . . . . .	6
4.1.1 Sample Level Three Heading . . . . .	6
<b>5 Conclusion</b>	<b>7</b>
<b>A Additional Material</b>	<b>8</b>

# LIST OF FIGURES

1.1	An Old, Rusty Ladder. . . . .	1
2.1	Another Image of a Ladder. . . . .	3
3.1	The Third Ladder. . . . .	4

## LIST OF TABLES

2.1	Comparisons of Scores, Numbers of Students, and Results Across Schools. . .	3
3.1	Age Groups, Average MPH, Tickets Received. . . . .	5

# CHAPTER 1: INTRODUCTION

Welcome to the thesis/dissertation template adapted for North Carolina Agricultural and Technical State University. This project uses numbered chapters and APA-like heading depth (if desired), with figures and tables centered and numbered by chapter.

## 1.1 Sample Level Two Heading and Heading Information

The sample headings are provided for your benefit. We recommend a numbering scheme for subheadings (e.g., 1.1, 1.2, 1.2.1, etc.) to orient readers.

### 1.1.1 Another Sample Level Two Heading

If numbering sub-headings, use 1.1, 1.2, etc. Indent the first line of text under Level 2 and Level 3 headings.

#### 1.1.1.1 Sample Level Three Heading and Template Information

You can cite like this [1]. Tables and figures should be referenced in text.

**How to Insert a Figure.** Place figures in the Fig/ folder and reference them with `\includegraphics`. All figures are centered; captions go below the figure.

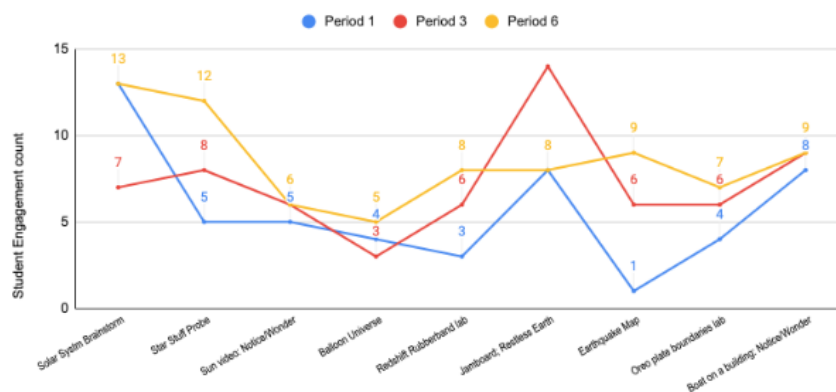


Figure 2. Student participation in modeling activities during synchronous class time, (N=72).

Figure 1.1: An Old, Rusty Ladder.



**A Note on Figure Captions.** Keep captions short; describe details in the main text.  
Lists of Figures/Tables are auto-generated.

## CHAPTER 2: LITERATURE REVIEW

### 2.1 Sample Level Two Heading and Information About Inserting Tables

Table captions are placed *above* the table. Keep formatting consistent.

Table 2.1: Comparisons of Scores, Numbers of Students, and Results Across Schools.

School	Average Score	Students	Results
MTR Academy	7.2	156	98
PWD School of Science	8.7	56	45
CFC High School	5.2	356	52
RCP Academy	6.4	421	87

#### 2.1.1 Sample Level 3 Heading

Always give context for figures and tables in the body text.

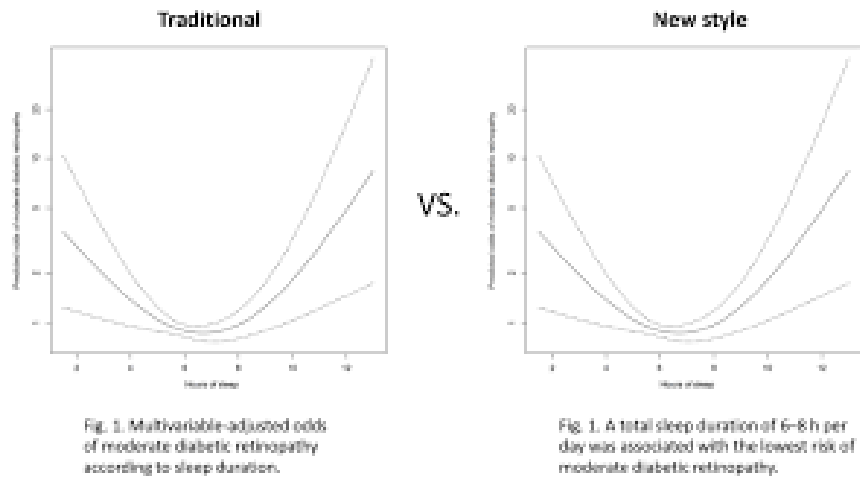


Figure 2.1: Another Image of a Ladder.

## CHAPTER 3: METHODOLOGY

### 3.1 Sample Level Two Heading

Your text starts here.

#### 3.1.1 Sample Level Three Heading

**Figure 2**

*Factors Influencing the Formation of Tourists' Needs*



*Note.* This model was produced by Ipatov in 2015, summarizing five groups of factors that influence the formation of tourists' needs. From "Factors That Obstruct Tourism Development in Bangladesh," by N. Jahan and S. Rahman, 2016, *CLEAR International Journal of Research in Commerce and Management*, 7(9), p. 53. Copyright 2016 by CLEAR Foundation.

Figure 3.1: The Third Ladder.

**Sample Level Four Heading.** Your paragraph text starts here.

Table 3.1: Age Groups, Average MPH, Tickets Received.

Age Group	Average MPH	Tickets
16–20	62	104
20–30	74	187
30–40	61	144
40–50	60	132

## CHAPTER 4: RESULTS AND DISCUSSION

### 4.1 Sample Level Two Heading

#### 4.1.1 Sample Level Three Heading

Sample Level Four Heading. Your text begins here.

## CHAPTER 5: CONCLUSION

Your text here.

## **APPENDIX A:    ADDITIONAL MATERIAL**

Appendix content can include code, large tables/figures, etc. Figures and tables in appendices will be labeled with the appendix letter (e.g., Figure A.1) automatically after `\appendix`.

## BIBLIOGRAPHY

- [1] J. Doe and R. Roe, “A great paper we cited,” *Journal of Solid Research*, vol. 42, no. 7, pp. 1–12, 2023.